



FP-04+ Firestop Sheet

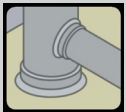
Applications



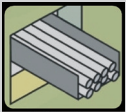
Air duct



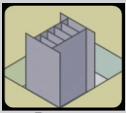
Insulated Pipe



Plastic Pipe



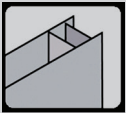
Cable Tray



Busway



Metallic Pipe



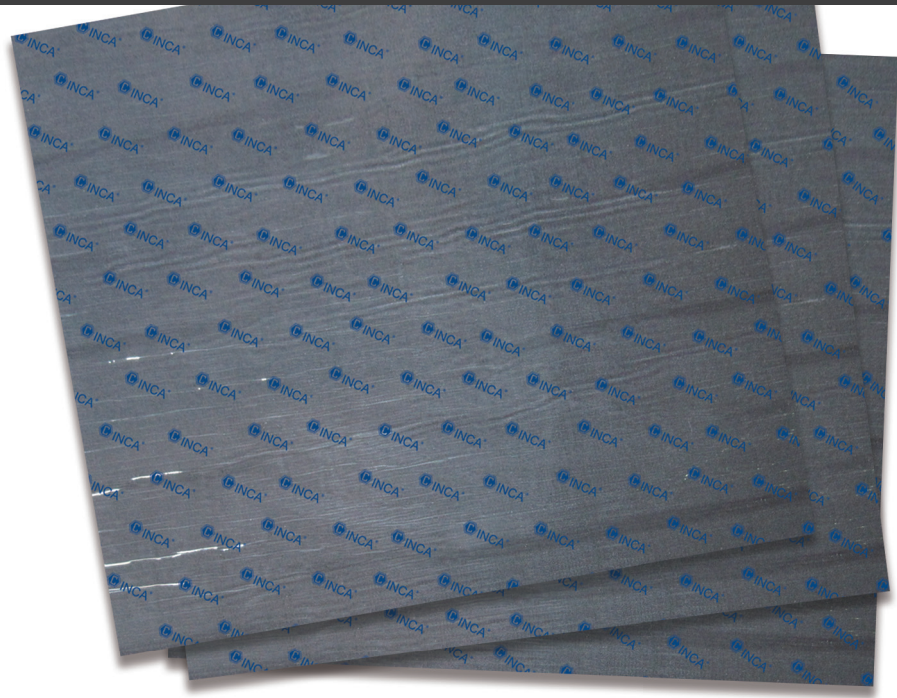
Partition Wall



Multiple Penetrations



No Penetration



Description

FP-04+ is an industry leading Firestop Sheet fabricated by bonding proprietary intumescent materials to a metal sheet. FP-04+ securely blocks flame and is designed to seal large penetrations through fire-rated walls and floors. It is also used for shielding cable trays, conduit, HVAC and vital process equipment from radiant heat, flame spread and smoke.

FP-04+ Firestop Sheet is thinner than our FP-02, providing a more cost effective solution for double-sided applications such as walls. It is easily re-penetrable and repairable with a common hole saw and can easily be trimmed to different sizes to fit any installation or large openings, working with nearly all construction materials. It is halogen and asbestos free, is very stable and maintenance free.

Meets the intent of LEEDS® VOC environmental air quality requirements.

Specifications

Size:	90 cm x 90 cm
Thickness:	≥ 2 mm
Weight :	7.8 Kg/Sheet
Expansion rate:	10 Times
In-Service Temp:	-13° F - 176° F (-25° C - 80° C)
Packaging:	4 Sheets per Pkg
Largest Listed opening	up to 74 square feet
Performance:	50+ years HOAC tested

FP-04+ Firestop Sheet

Testing

ASTM E 814 up to 3 hr F and T Rating

UL 1479 3 hr F and T Rating

L Rating at Ambient – Less than 1 cfm/sq ft.

ULC S-115 up to 3 hr F Rating

Up to 1-1/2 hr FT Rating

Up to 3 hr FH Rating

Up to 1 hr FTH Rating

L Rating at Ambient – Less than 5.1 L/Sm²

ASTM E84 Flame 5 Smoke 90

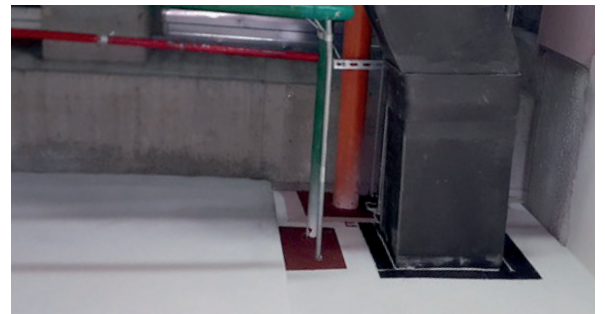
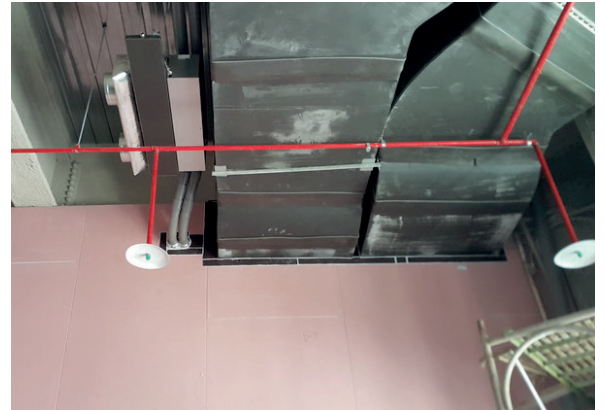
FM Approved

CNS 14514 3 hr Class A&B

GB 23864

Installation guide:

1. Refer to applicable certification directory or www.painttoprotect.com for listed assemblies.
2. Ensure application area is clean and free of oil, loose dirt, rust or scale.
3. When max opening dimensions exceed 20 in. (508mm) in both width and length, two minimum 2 x 2 in. (51 by 51 mm) by No.10 gauge galvanized steel angles shall be installed within the longest dimension of the opening, with one angle flush with both top and bottom of floor or both surfaces of wall. These angles provide a framing member for intermediate securement of the firestop sheet at both surfaces of opening.
4. Cut sheet to an overall rectangular size such that it overlaps the floor or wall around the periphery of the opening according to Listed system. Cut sheet to fit the contour of the through penetrants within the opening.
5. Apply a min 3/8 in. (10 mm) thickness of INSS1440 around the periphery of each firestop sheet prior to securing it to the floor or wall. In addition, min 3/8 in. (10 mm) bead of sealant applied at the periphery of the through penetrant/firestop sheet interface on both sides of the floor or wall.
6. Install firestop sheet with intumescent bonded layer exposed, install sheet on both surface of wall or floor opening as per Listed system.
7. Secure sheet to wall or floor surface using the require number and spacing of fasteners as detailed in the Listed system.



International Fireproof Technology Inc.
The Ultimate in Firestop Solutions and Fire Protective Coatings

International Fireproof Technology, Inc.
17528 Von Karman Ave. Irvine, CA 92614

Office: 949-975-8588
Web Site: www.painttoprotect.com
Email: ptp@painttoprotect.com